

# Protective Cover Installation Guide

Thank you for purchasing Pro-face's Protective Cover.

The installation of the cover is to protect Display from leaking liquid and raise resistant performance against chemical substance.

All product names used in this document are the trademarks of their respective manufactures.

Pro-face : Digital Electronics Corporation (in Japan and other countries)

## Safety Precautions

This Installation Guide includes important safety-related information that must be followed to ensure the correct and safe use of the Protective Cover. Prior to operating Display, be sure to read both this guide and any related manuals to thoroughly understand the correct operation and functions of both the Protective Cover and Display.

### ■ Safety Icons

Throughout this manual the following icons are used to indicate procedures requiring special attention to safety.

These icons have the following meaning:



### **WARNING**

Indicates situations where severe bodily injury, death or major machine damage can occur.



### **CAUTION**

Indicates situations where bodily injury or machine damage can occur.



### **WARNING**

- Installing the Protective Cover while power is supplied to Display may lead to an electric shock. Prior to installing the Protective Cover, confirm that Display's power supply is disconnected.



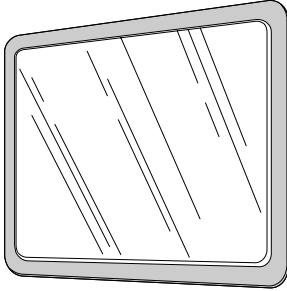
### **CAUTION**

- Prior to installing the Protective Cover, carefully read Section 3. Installation.

# Package Contents

The packing box contains the items listed below. Please check to confirm that all items shown below have been included.

■ Protective Cover(5)



■ Installation Guide:This Guide(1)



Protective Cover has been carefully packed, with special attention to quality. However, should you find anything damaged or missing, please contact your local Pro-face distributor immediately.

## 1 General Specifications

■ External Specifications

|                    | CA4-DCMDL-01  | CA8-ODP10-01   |
|--------------------|---|--|
| External Dimension | W 190.0mm [7.48in.] xH 158.0mm [6.22in.] xD 5.5mm [0.22in.] | W 298.0mm [11.73in.] xH 240.0mm [9.45in.] xD 5.5mm [0.22in.] |
| Weight             | 20g [0.04lb] or less  | 60g [0.13lb] or less   |
| Color              | Transparency  |  |
| Material           | PET Resin   |  |

■ Chemical Resistant Performance

| Chemical Name              | Pass | Chemical Name        | Pass |
|----------------------------|------|----------------------|------|
| Hydrochloric acid 10%      | ○    | Hexane               | ○    |
| Concentrated Chloride      | x    | Kerosine Oil         | ○    |
| Sulfuric Acid 30%          | ○    | Mineral Oil          | ○    |
| Concentrated Sulfuric Acid | x    | Mortar Oil           | ○    |
| Sodium hydroxide 1%        | ○    | Cottonseed Oil       | ○    |
| Sodium hydroxide 10%       | x    | Olive Oil            | ○    |
| Formic Acid 5%             | ○    | Carbon tetrachloride | ○    |
| Formic Acid 90%            | x    | Trichloroethylene    | ○    |
| Oleic Acid 100%            | ○    | Ethanol              | ○    |
| Hydrogen peroxide 3%       | ○    | Toluene              | ○    |

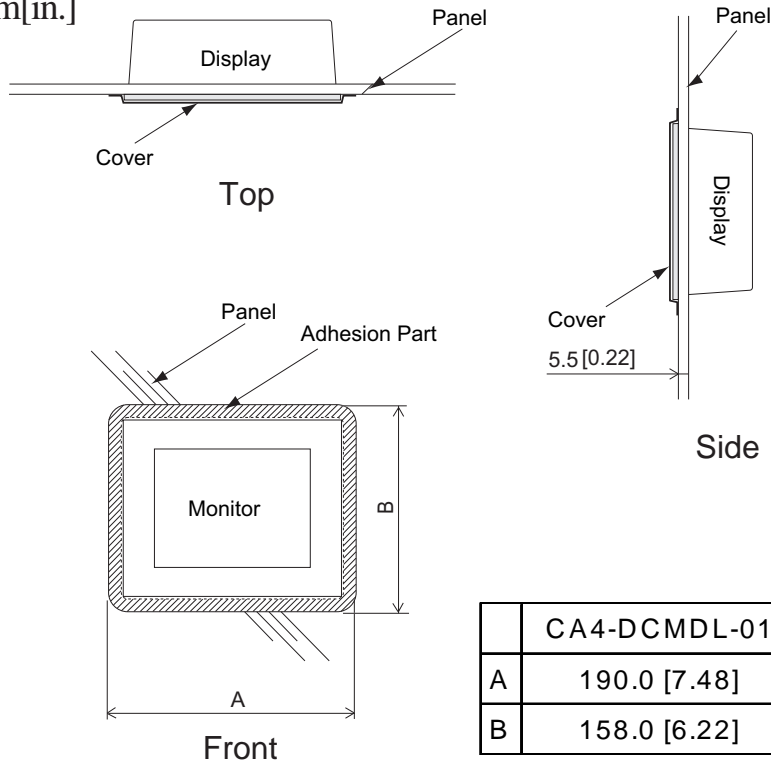
○: Pass  
X: Fail

Although created based on the reliable information which came to hand from the material maker, since chemical resistance is influenced according to use environment, it does not offer a guarantee on all conditions. On the occasion of the time of use, clients should examine individually and confirm conformity enough.

## 2 External Views and Dimensions

The following drawing shows Display with Protective Cover.

Unit:mm[in.]

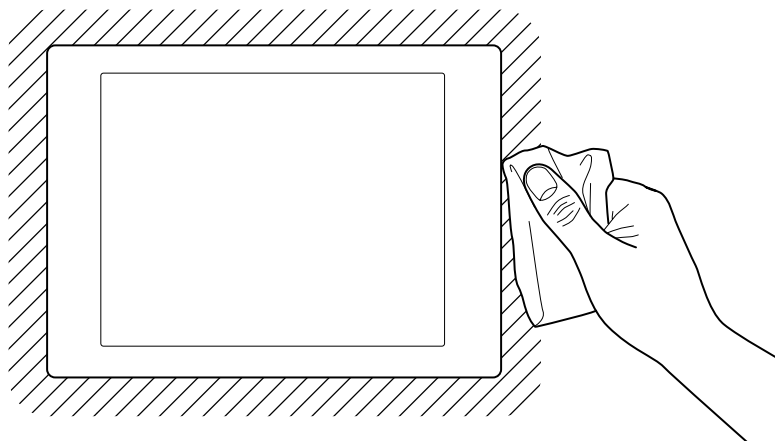


## 3 Installation

The following installation procedures are described showing 5.7" Display with CA4-DCMDL-01. The same procedures for CA8-ODP10-01.

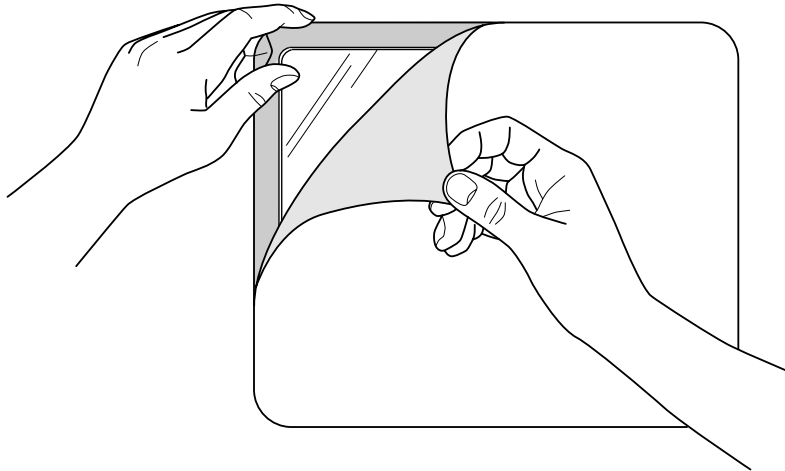
**⚠** Do not cut your hands at the edge of the cover when attaching the Protective Cover.

- 1) Wipe off the dust of Display surface finely with a cloth made to get wet with neutral detergent.
- 2) Clean up the field of the panel where paste adheres to the circumstance of Display, not to remain any oil and dust.

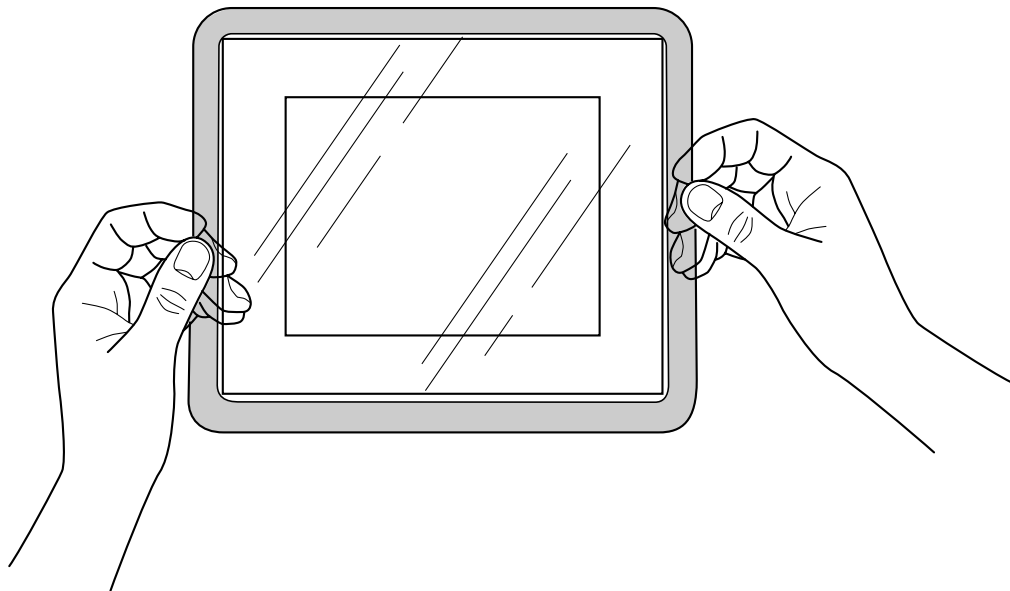



Continued on the next page

3) Remove the seal of the surface of the Protective Cover from the coner.



4) Install the Protective Cover on front of Display.



 There is a possibility of loosing best performance of the resistance capability, if the cover's surface gets oil and dust.

**Note**

Be aware that the Digital Electronics Corporation shall not be held liable for any real or estimated damages or losses, or third party claims resulting from the use of this product.

Digital Electronics Corporation

8-2-52 Nanko-higashi Suminoe-ku, Osaka,

559-0031, JAPAN

TEL: +81-(0)6-6613-3116

FAX: +81-(0)6-6613-5888

URL: <http://www.proface.com>

©Copyright 2004 Digital Electronics Corporation. All rights reserved.