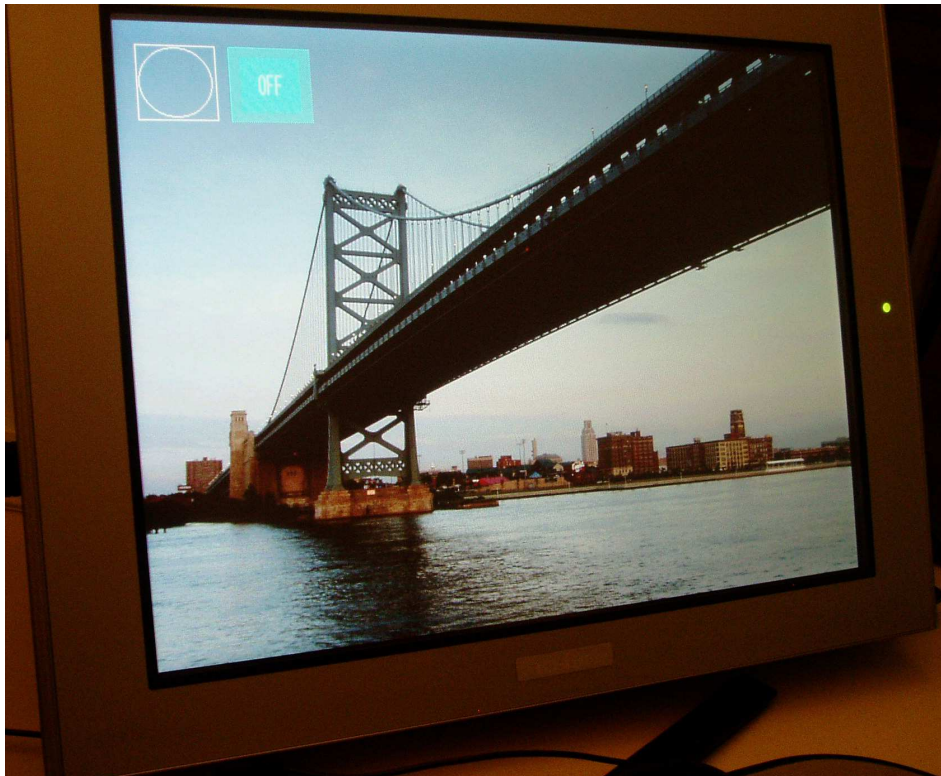


## Application Note #1235: PC Display with GP2000VM on AGP3000 Series

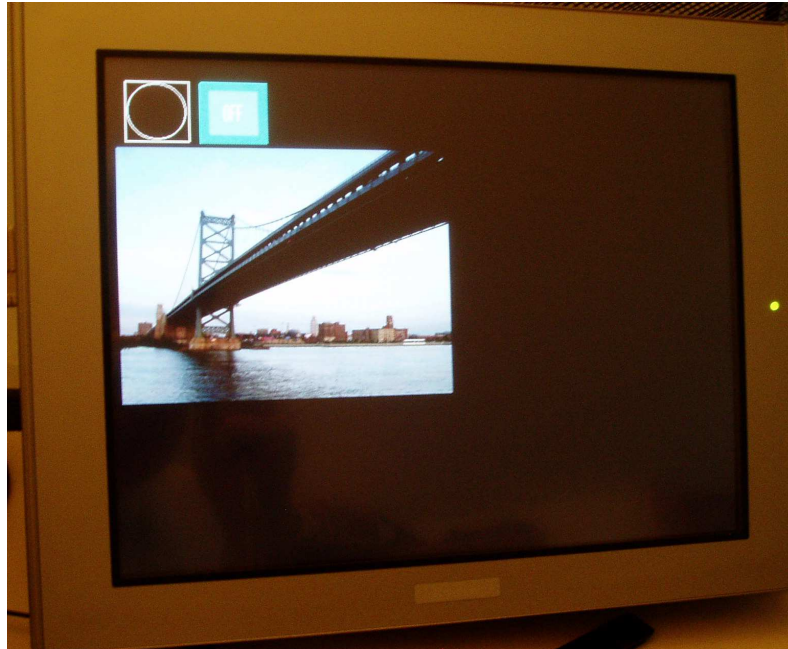
### Key Points

- GP2000VM module can be used with AGP35X0 and AGP36X0 to provide 4 video inputs plus an RGB in/out for PC display.
- The maximum resolution using video in (NTSC) or RGB-in is SVGA i.e. 800x600.
- The screen resolution of the AGP36X0 is also SVGA, so full screen PC display is possible.

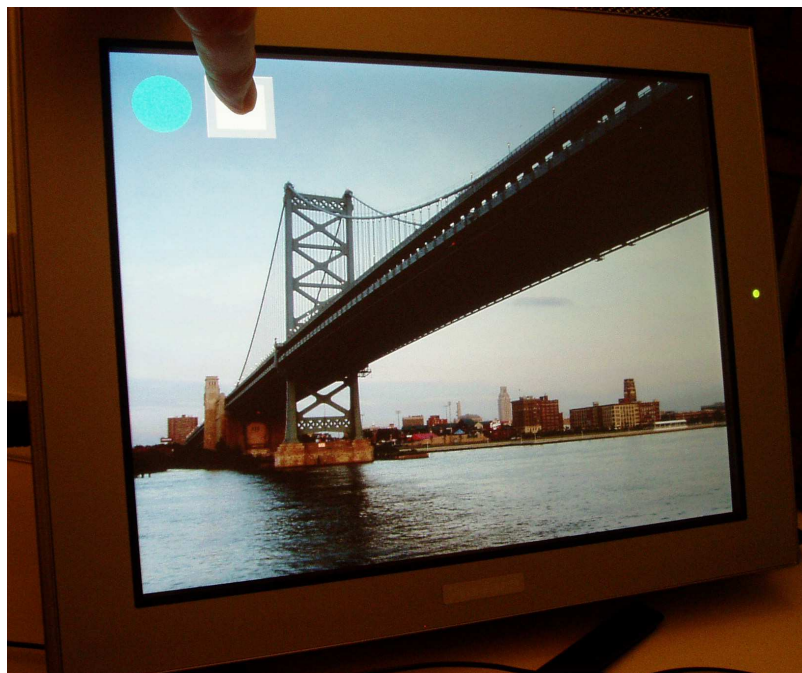


- Screen resolution on AGP35X0 is VGA (640x480), so SVGA is cropped if at full size, but can be displayed at 400x300 (compressed).

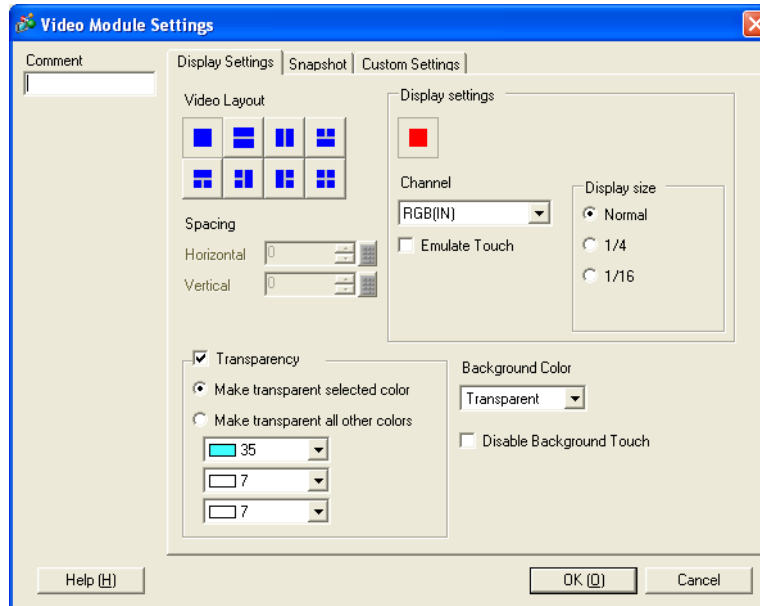
- The AGP36X0 can also use SVGA displayed in a QVGA size i.e. full content, small size.



- If XGA input is used, a 'squeezed' display which is also cropped is displayed. Not recommended for real application use, as results cannot be guaranteed.
- Up to 3 transparent colors can be set which overlay the video (sky blue and white shown). The term transparent here, meaning; causing the video display to be transparent to these colors. i.e. these are the colors which display through the video.



- Be careful not to set the Base Screen background color as 'Transparent' or it will swamp the video display.
- Touch can be enabled or disabled in the video display area. If you want to 'Cover' touch parts behind the display, tick 'Disable Background touch'.



- Mouse emulation by Touch to a PC serial port is also possible.

-----  
For more information on Pro-face and our full line of HMI, Operator Interface and Industrial PC products please visit our web site at [www.profaceamerica.com](http://www.profaceamerica.com).

For technical support email: [support@profaceamerica.com](mailto:support@profaceamerica.com) or call: 800.289.9266.  
-----

© 2016 Pro-face America. Specifications may change without notice. Pro-face is a registered trademark of Digital Corporation. Other brand or product names are the property of their respective owners.