

Application Note # 1230: SP5000 Boot to Windows Desktop

Introduction

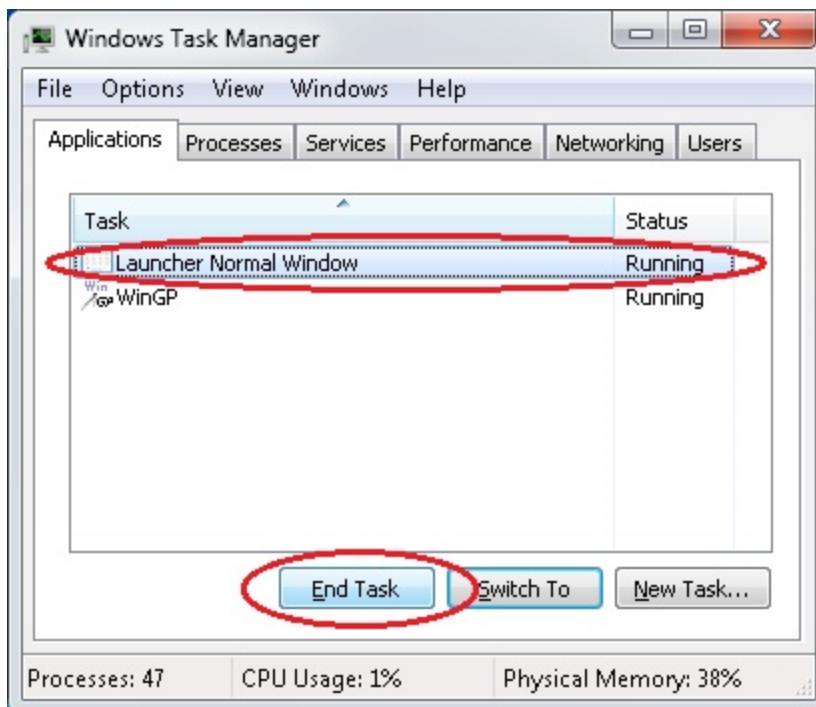
The SP5000 Open Box (SP-5B40) is configured from the factory to boot to the initial WinGP Welcome Screen and the Explorer Shell - Launcher. The Launcher is a utility that presents files, programs, and settings as convenient touch-operated tiles. This application note explains how to disable the Launcher.

The operating system on the SP5000 Open Box is Windows® Embedded Standard 7 (WES7). In a typical installation the Write Filter feature of WES7 is enabled for security preventing changes to the computer and the Windows® desktop is hidden from the operator.

Disable Launcher Feature

Don't want to see the Initial Welcome screen or Launcher? These steps reconfigure the SP5000 Open Box so it will boot to the Windows® desktop.

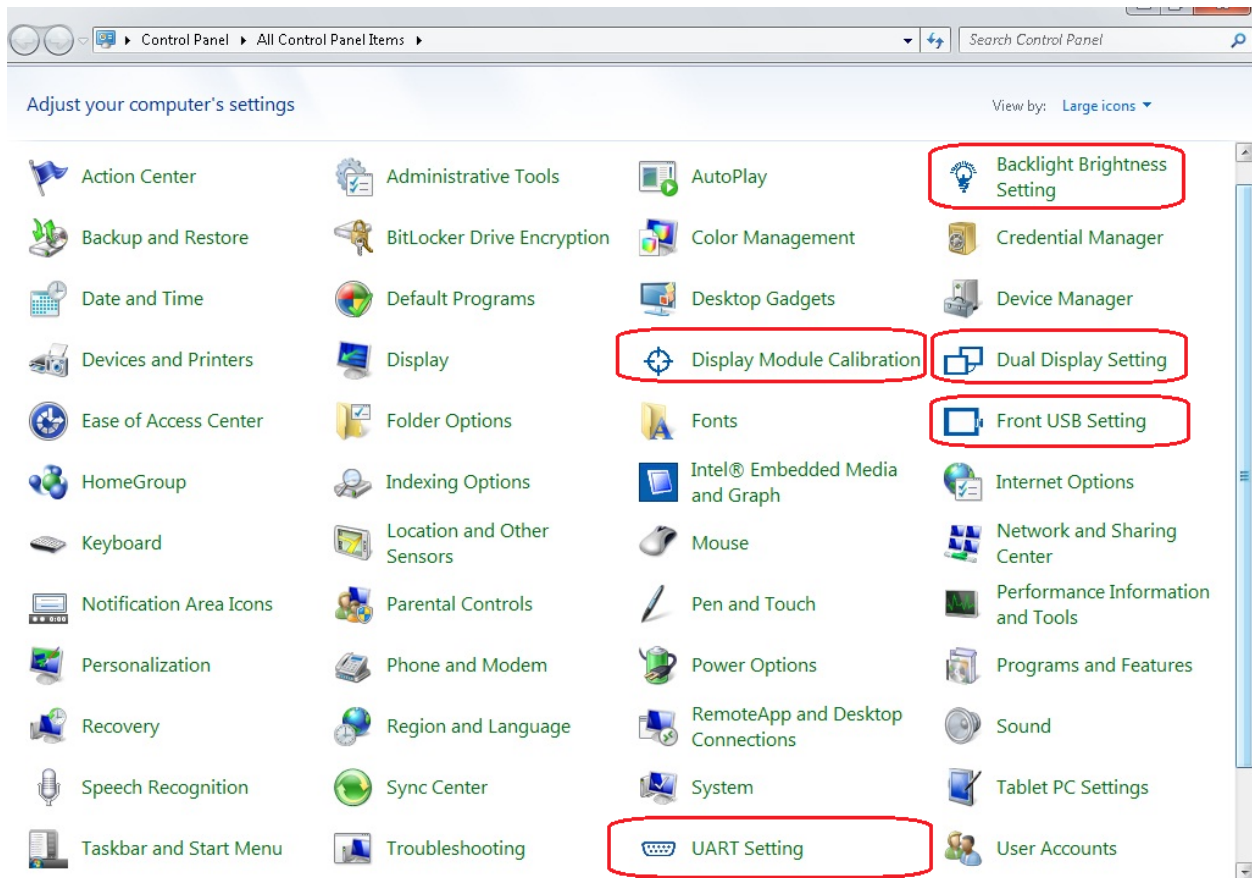
1. Go to the Windows Desktop
2. Press [Ctrl] - [Alt] - [Del]. Select "Start Task Manager".



3. Click "Launcher Normal Window". Click [End Task]
4. Change the file name at C:\Utility\LaunChanger\Launchanger.exe
5. Reboot

Other Changes When Launcher is Disabled

- While the Launcher feature is disabled the HMI runtime (WinGP) does not automatically start. To start HMI runtime (WinGP) execute the file: C:\Pro-face\WinGP\PCRuntime.exe
- The same hardware configuration functions in the Launcher can also be accessed from Control Panel.



- EWF can be enabled and disabled from the Windows Start Menu command line. The command format is:
EWFmgr <drive-letter>(optional) [options]
 - [EWF disable] ewfmgr -all -commitanddisable -live
 - [EWF enable] ewfmgr -all -enable

When it is changed from disable to enable, it is required to reboot.

Restore the Launcher Feature

You can restore the launcher feature to its original configuration.

1. Go to the Windows Desktop
2. Change the file you renamed at C:\Utility\LaunChanger\ back to "Launchanger.exe"
3. Reboot

For more information on Pro-face and our full line of HMI, Operator Interface and Industrial PC products please visit our web site at www.profaceamerica.com.

For technical support email: support@profaceamerica.com or call: 800.289.9266.

© 2015 Pro-face America. Specifications may change without notice. Pro-face is a registered trademark of Digital Corporation. Other brand or product names are the property of their respective owners.