

## Application Note #1212: DF1 to GP-Pro EX using AB Programming Cable

### Introduction

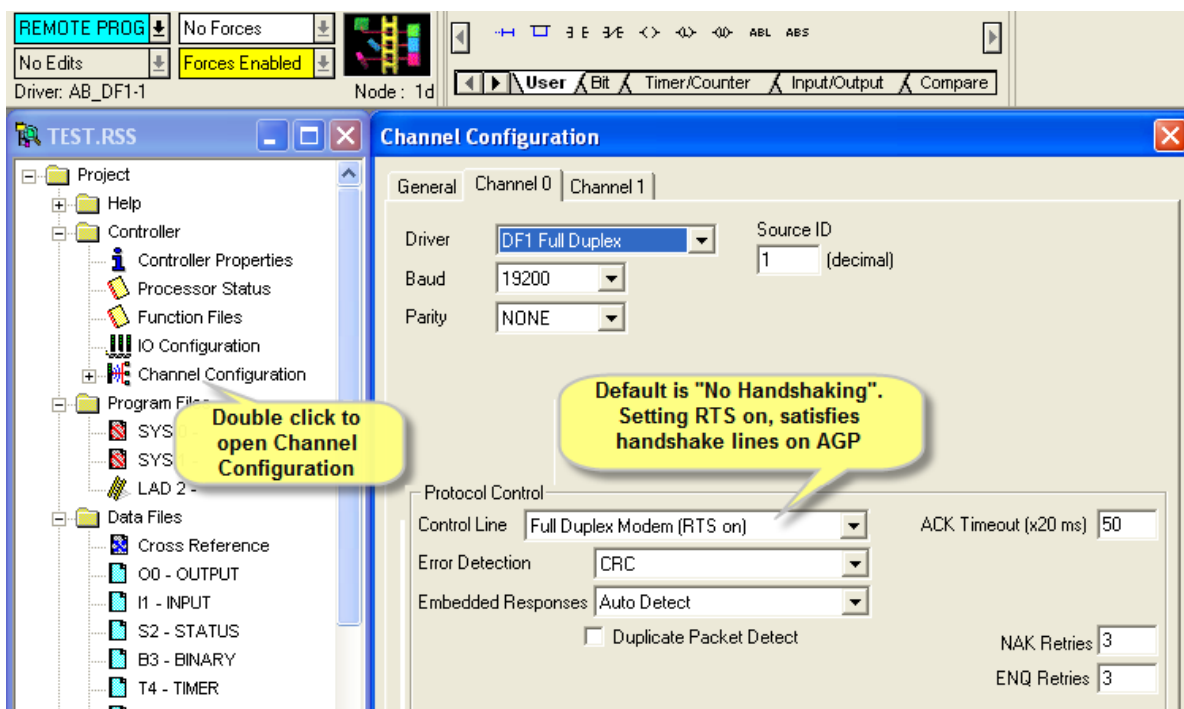
In many cases it is possible to connect a Pro-face display to a Rockwell Automation (Allen Bradley) SLC500 or Micrologix PLC with an Allen Bradley PLC programming cable (1747-CP3 or 1761-CBL-PM02). Only a small change to the PLC Channel Configuration is required. This solution is not suitable for SLC5/01, SLC5/02, or Micrologix 1000 PLCs. It applies to all Pro-face HMIs with a COM1 DB9 interface in RS232 mode.

The GP-Pro EX Rockwell Automation DF1 PLC/Device driver requires handshake control on the RS232 port. The recommended cabling includes and the “Settings of External Device” given in the Device/PLC manual require a jumper from pin 7 to pin 8 to complete the handshaking. The PLC programming cable connects these pins back to the PLC. The PLC Channel configuration dialog includes an option to enable handshaking in the PLC. When this option is selected the handshaking circuit is complete.

For a list of Pro-face America recommended cable solutions refer to APNT1183 “Rockwell (Allen Bradley) Cabling Addendum”. Also refer to the Pro-face device connections manual “Rockwell Automation DF1”

### PLC Channel Configuration

The default RS232 channel configuration in the PLC is “No Handshaking”. In RSLogix500 select “Full Duplex Modem (RTS on)” to enable the handshake lines in the PLC. For all other settings follow the instructions in the Pro-face Device/PLC Driver manual. This change will enable the Pro-face display to communicate with the PLC using a standard AB programming cable.



*Note: Making the change may cause an initial loss of communications to RSLogix 500, but this can be reconnected using RSLinx.*

-----

For more information on Pro-face and our full line of HMI, Operator Interface and Industrial PC products please visit our web site at [www.profaceamerica.com](http://www.profaceamerica.com).

For technical support email: [support@profaceamerica.com](mailto:support@profaceamerica.com) or call: 800.289.9266.

-----