

Easy! Smooth!
ST40x Series
Replacement Guidebook

Preface

This guidebook introduces the procedures to replace the unit in the ST40x series (ST-400/401/402/403) with the ST3000/GP3000 series (ST-3201/3211, GP-3200A). The recommended replacement models are as follows.

Model in use	Replecement model
ST-400	ST-3201A
ST-401	
ST-402	ST-3211A
ST-403	GP-3200A



Second Edition: June 2009

Table of Contents



<u>CHAPTER 1. SPECIFICATION COMPARISON</u>	4
1.1 SPECIFICATIONS OF ST-400/401 AND ST-3201A.....	4
1.2 SPECIFICATIONS OF ST-402 AND ST-3211A.....	5
1.3 SPECIFICATIONS OF ST-403 AND GP-3200A.....	6
<u>CHAPTER 2. COMPATIBILITY OF HARDWARE</u>	7
2.1 LOCATION OF INTERFACES	7
2.2 TOUCH PANEL SPECIFICATIONS	8
2.3 SCREEN DATA TRANSFER.....	8
2.4 ABOUT FUNCTION SWITCHES.....	8
2.5 ABOUT THE SERIAL INTERFACE.....	8
2.6 ABOUT POWER CONSUMPTION	8
<u>CHAPTER 3. REPLACEMENT PROCEDURE</u>	9
3.1 WORK FLOW.....	9
3.2 PREPARATION	11
3.3 RECEIVE SCREEN DATA FROM THE ST40X SERIES.....	12
3.4 CONVERT SCREEN DATA WITH THE PROJECT CONVERTER.....	15
3.5 DIFFERENCES OF SOFTWARE AFTER CONVERSION	21
3.6 TRANSFER SCREEN DATA TO THE ST3000/GP3000.....	22
<u>CHAPTER 4. COMMUNICATION BETWEEN ST3000/GP3000 AND DEVICE/PLC</u>	26
4.1 SHAPES OF COM PORTS.....	26
4.2 MULTILINK CONNECTION	322

Chapter 1. Specification Comparison



1.1 Specifications of ST-400/401 and ST-3201A

			ST-400/401	ST-3201A
				
Display Type			Monochrome LCD	NEW! Monochrome Amber/Red LCD
Display Colors			2 levels / 8 levels	UP! 8 levels
Display Resolution			QVGA (320 × 240 pixels)	
Panel Cut Dimensions (Unit: mm [in.])			W118.5 [4.67] × H92.5 [3.64]	
External Dimensions (Unit: mm [in.])			W130 [5.12] × H104 [4.09] × D41 [1.61]	W130 [5.12] × H104 [4.09] × D40 [1.57]
Touch Panel Type			Matrix	NEW! Resistive Film (Analog) → See 2.2
Serial Interface	COM1	400	9-pin D-Sub (male) RS-422	9-pin D-Sub (male) RS-232C
		401	9-pin D-Sub (male) RS-232C	
	COM2		No	NEW! 9-pin D-Sub (male) RS-485 (422)
Memory	Application		640KB	UP! 6MB
	SRAM		96KB	UP! 320KB
USB Host Interface			No	NEW! Yes → See 2.3

1.2 Specifications of ST-402 and ST-3211A

		ST-402	ST-3211A
			
Display Type		Monochrome LCD	NEW! Monochrome Amber/Red LCD
Display Colors		2 levels / 8 levels	UPI! 8 levels
Display Resolution		QVGA (320 × 240 pixels)	
Panel Cut Dimensions (Unit: mm [in.])		W118.5 [4.67] × H92.5 [3.64]	
External Dimensions (Unit: mm [in.])		W130 [5.12] × H104 [4.09] × D41 [1.61]	W130 [5.12] × H104 [4.09] × D40 [1.57]
Touch Panel Type		Matrix	NEW! Resistive Film (Analog) → See 2.2
Serial Interface	COM1	9-pin D-Sub (female) RS-485 (MPI only)	NEW! 9-pin D-Sub (male) RS-232C
	COM2	9-pin D-Sub (male) RS-422	NEW! 9-pin D-Sub (female) RS-485 (MPI only)
Memory	Application	640KB	UPI! 6MB
	SRAM	96KB	UPI! 320KB
USB Host Interface		No	NEW! Yes → See 2.3

1.3 Specifications of ST-403 and GP-3200A

		ST-403	GP-3200A
			
Display Type		Monochrome LCD	NEW! Monochrome Amber/Red LCD
Display Colors		2 levels / 8 levels	UP! 8 levels
Display Resolution		QVGA (320 × 240 pixels)	
Panel Cut Dimensions (Unit: mm [in.])		W118.5 [4.67] × H92.5 [3.64]	
External Dimensions (Unit: mm [in.])		W130 [5.12] × H104 [4.09] × D41 [1.61]	W130 [5.12] × H104 [4.09] × D41 [1.61]
Touch Panel Type		Matrix	NEW! Resistive Film (Analog) → See 2.2
Serial Interface	COM1	9-pin D-Sub (male) RS-232C/RS-422	NEW! 9-pin D-Sub (male) RS-232C/ RS-422/485
Memory	Application	640KB	UP! 6MB
	SRAM	96KB	UP! 320KB
Ethernet Interface		10BASE-T	UP! 10BASE-T/ 100BASE-TX → See 2.3
USB Host Interface		No	NEW! Yes → See 2.3

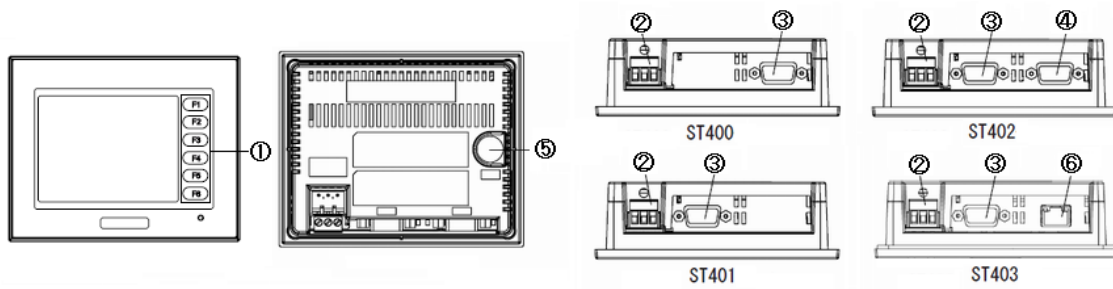
Chapter 2. Compatibility of Hardware

2.1 Location of interfaces

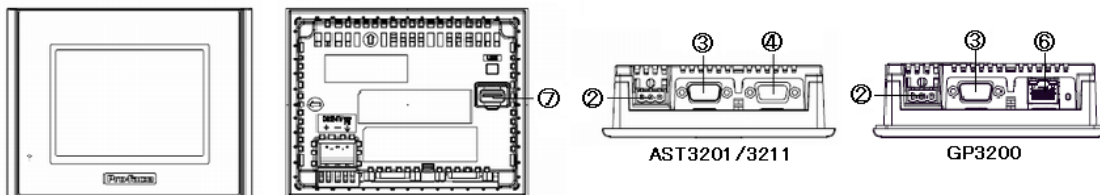
Locations of connectors and switches on the ST40x series and the ST3000/GP3000 series are as follows.

2.1.1 Rear of ST-400/401/402/403, ST-3201/3211 and GP-3200A

ST-400/401/402/403



ST-3201/3211, GP-3200A



Interface names

	ST40x Series	ST3000/GP3000 Series
1	Function Switch	-
2	Power Plug Connector	
3	Serial Interface (COM1)	
4	Serial Interface (COM2) *1	
5	Tool Connector	-
6	Ethernet Interface *2	
7	-	USB Host Interface

*1: ST-400, 401, 403, and GP-3200 don't have this interface.

*2: Only ST-403 and GP-3200 have this interface.

2.2 Touch panel specifications

The ST3000/GP3000 units are analog resistive. An analog resistive touch panel does not recognize the touch input when you touch two points at the same time. If you applied the two-point touch input on the ST40x unit, we recommend you change to the one-point touch input using the switch delay function.

2.3 Screen data transfer

To transfer screen data to the ST3000/GP3000 unit, use a USB transfer cable for the GP3000 series (model: CA3-USBCB-01). Please note that any commercial USB cable cannot be used. Transfer cables (GPW-CB02, GPW-CB03, GP430-CU02-M) that are used via the tool port cannot be used with the ST3000/GP3000 unit.

2.4 About function switches

The ST3000/GP3000 units are not equipped with the Function Switches. The switches that have been set on the ST40x unit are not converted.

2.5 About the serial interface

The COM1 port on the ST402 unit is for RS-485 (MPI) communication and the COM2 port is for RS-422. On the other hand, the COM1 port on the ST-3211A unit is for RS-232C and the COM2 port is for RS-485 (MPI). The devices connected to the ST-402 unit via the COM2 port, which require the RS-422 communication, cannot be used with the ST-3211A unit.

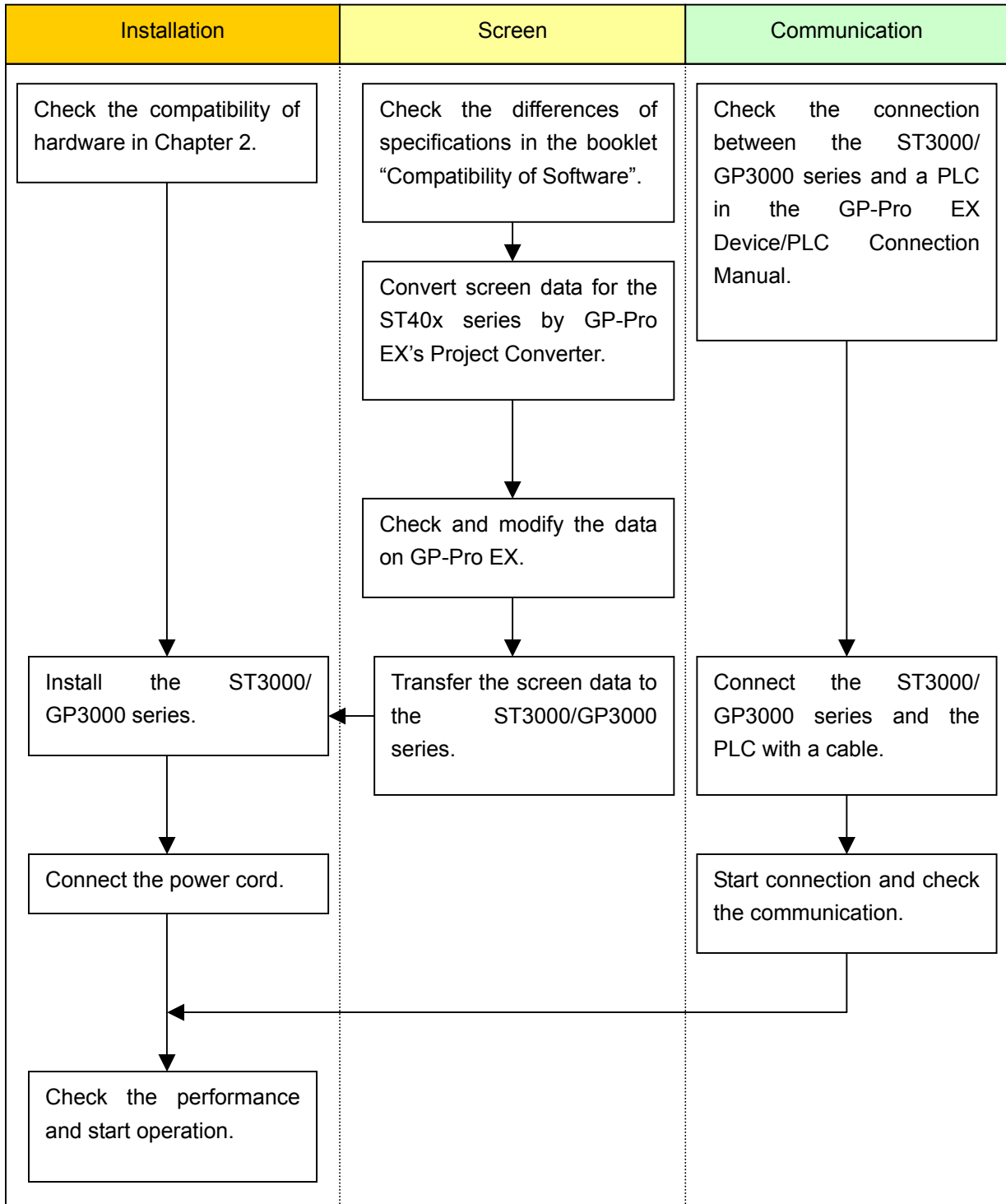
2.6 About power consumption

The power consumption of the ST3000/GP3000 series and that of the ST40x series are different. Please check the power supply capacity that is supplied to the display unit.

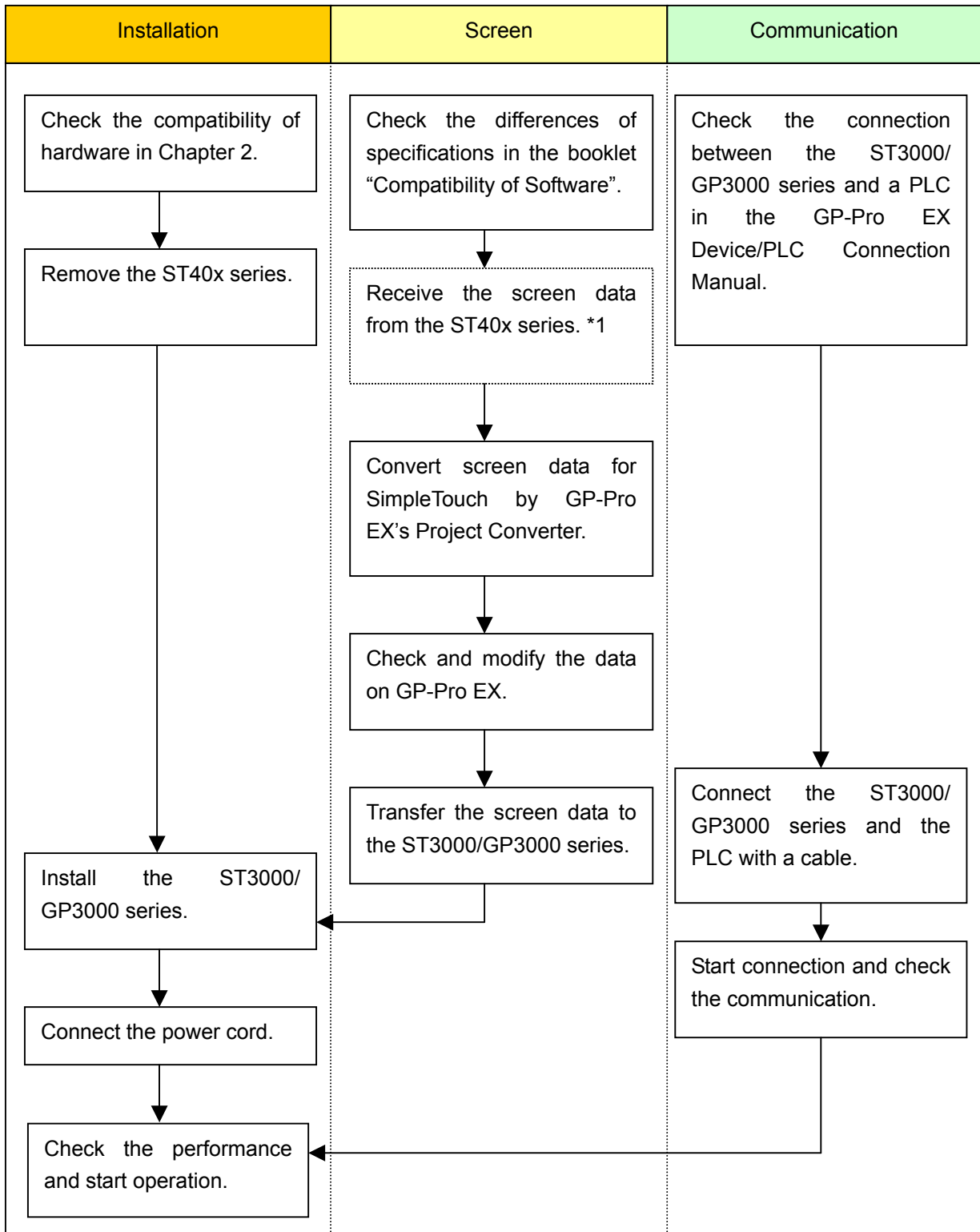
Chapter 3. Replacement Procedure

3.1 Work Flow

► To change the equipment designed for the ST40x series to the ST3000/GP3000 series



► To replace the ST40x series mounted to the equipment to the ST3000/GP3000 series



*1: This step is required if screen data is saved only in the display unit, not in any other device.

3.2 Preparation

Requirements for receiving screen data from the ST40x series *1	PC in which the following version of GP-PRO/PB3 for Windows is installed *2				
	<table border="1"> <tr> <td>ST400, 401, 402</td> <td>C-Package03 GP-PRO/PB3 for Windows Ver.7.0 or higher</td> </tr> <tr> <td>ST403</td> <td>C-Package03 GP-PRO/PB3 for Windows Ver.7.20 or higher</td> </tr> </table>	ST400, 401, 402	C-Package03 GP-PRO/PB3 for Windows Ver.7.0 or higher	ST403	C-Package03 GP-PRO/PB3 for Windows Ver.7.20 or higher
	ST400, 401, 402	C-Package03 GP-PRO/PB3 for Windows Ver.7.0 or higher			
ST403	C-Package03 GP-PRO/PB3 for Windows Ver.7.20 or higher				
<p>Transfer cable (The following three types of cable are available.)</p> <ul style="list-style-type: none"> • GPW-CB02 (9-pin D-sub to the PC) • GPW-CB03 (USB to the PC) *2 • GP430-CU02-M or GPW-SET <p>ST-403 also allows you to transfer screen data via Ethernet.</p>					
Requirements for converting screen data of the ST40x series and transferring to the ST3000/GP3000 series	PC in which GP-Pro EX is installed				
	<p>Transfer cable (model: CA3-USBCB-01)</p> <p>The ST3000/GP3000 series allows you to transfer screen data via a CF card or USB flash drive. (Transfer via Ethernet is available with the GP3000 series.)</p>				

*1: This step is required if screen data is saved only in the display unit, not in any other device.

*2: The software version must be the same or higher than the version that you used when creating screen data for the ST40x series. We recommend you to upgrade to the latest version (Ver.7.29 as of August 2008.)

*3: GPW-CB03 is compliant with GP-PRO/PB3 for Windows C-Package02 SP2 Ver. 6.23 or later.

To use it, you may need to [install the driver](#).

Go to our support website [Otasuke Pro!](#)

-> Download

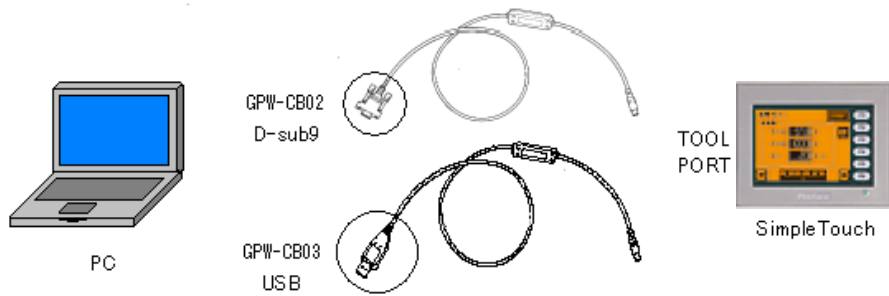
-> Updates/Drivers

-> GP-PRO/PB3: USB Data Transfer Cable (GPW-CB03)

3.3 Receive screen data from the ST40x series

This section explains, as an example, how to receive screen data from the GP unit using a transfer cable GPW-CB02 or GPW-CB03. If you have backed up screen data, this step is unnecessary; skip to the next section “3.4 Convert screen data with the Project Converter.”

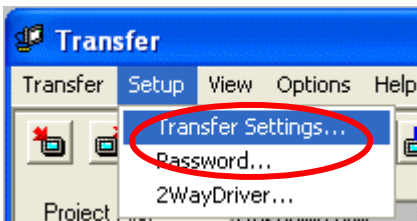
1. Connect a transfer cable to the ST40x series.



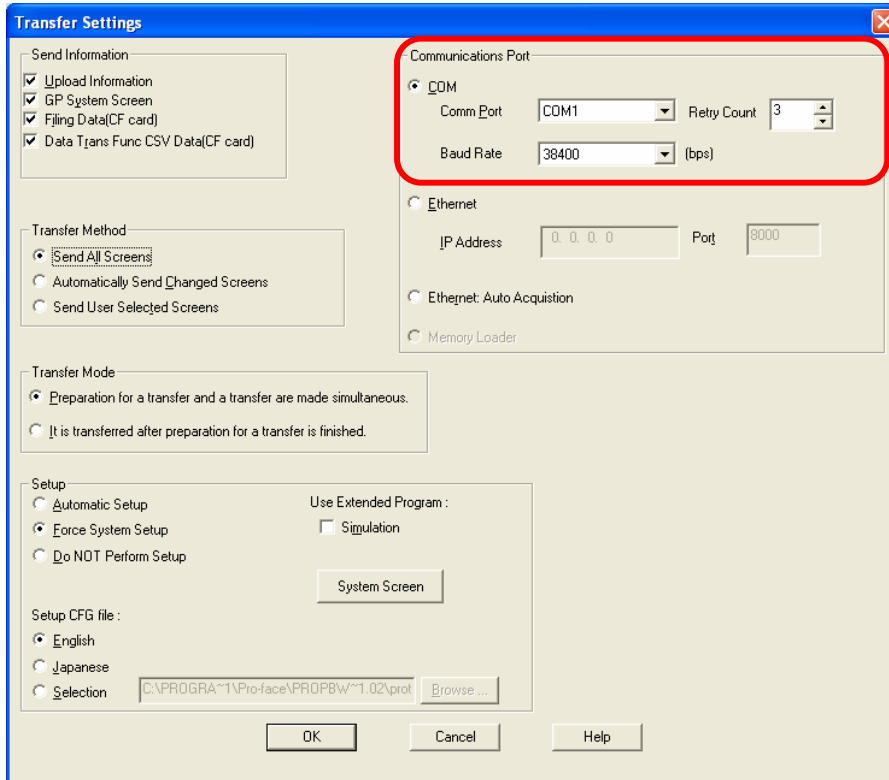
2. Start up GP-PRO/PB3 C-Package and click the [Transfer] icon on the Project Manager. (Specify a desired project file.)



3. On the [Transfer] window, select the [Setup] menu and click [Transfer Settings...].

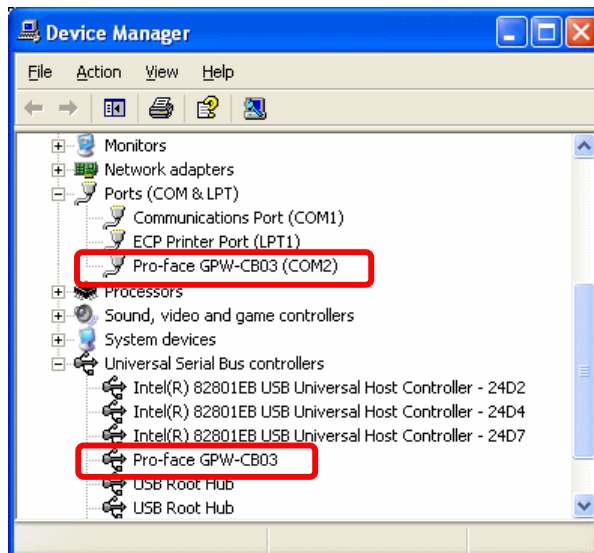


4. In the Communication Port field, select [COM], specify the COM port to which the cable is connected, and click [OK].

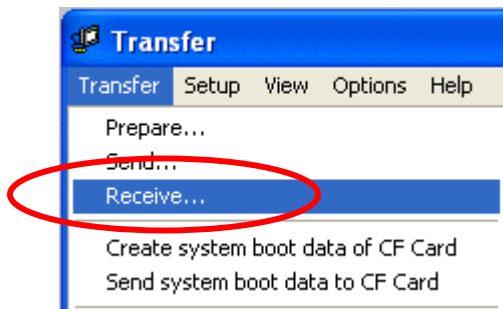


If you use a USB transfer cable (GPW-CB03)...

You can check the COM port for the USB transfer cable (GPW-CB03), which is assigned to the PC with the Device Manager of Windows.



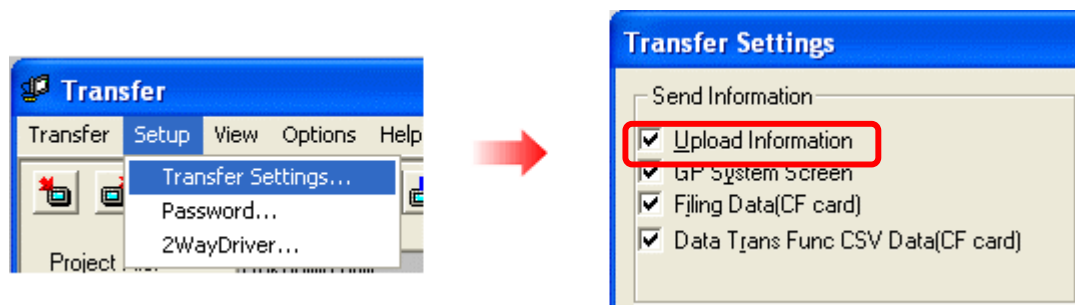
5. Select the [Transfer] menu and click [Receive...].



6. Specify the location to save the received screen data in and the project file name and save.

In case there is no Upload Information...

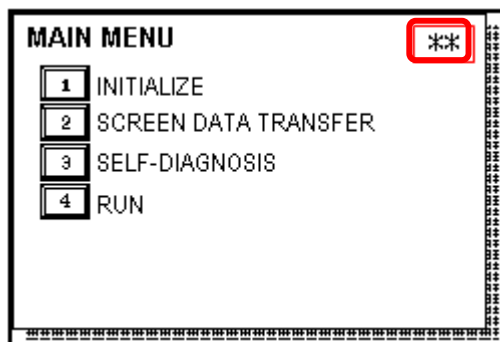
"Upload Information" is the necessary information to receive screen data from the display unit. It needs to be included in screen data when transferring screen data to the display unit beforehand. The Upload Information is sent to the display unit by default, however, you may check off the box of Upload Information to prevent screen reception by a third party.



In this case, a message, which indicates there is no Upload Information," appears and you cannot receive the data.

You can check if the Upload Information has been sent or not in the following way.

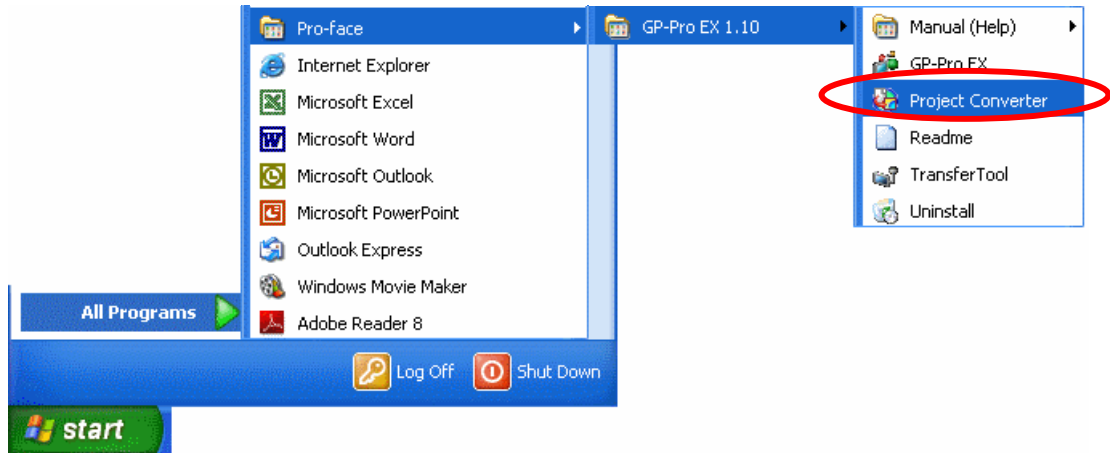
Enter into the GP's Offline mode. If there are 2 asterisk (*) marks in the Main menu as below, the Upload Information has been sent. If not, there is no Upload Information sent.



3.4 Convert screen data with the Project Converter

Convert a project file (*.prw) for the ST40x series with the GP-Pro EX's Project Converter.

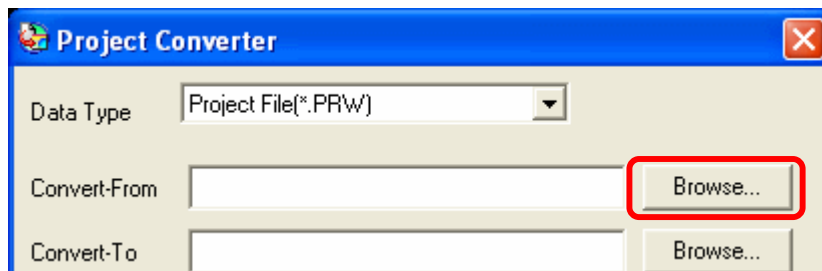
1. Click the [Start] button, select the [All Programs] ([Programs] on Windows® 2000 menu → [Pro-face] → [GP-Pro EX*.**]. (Where **. is the version of the software you use.)

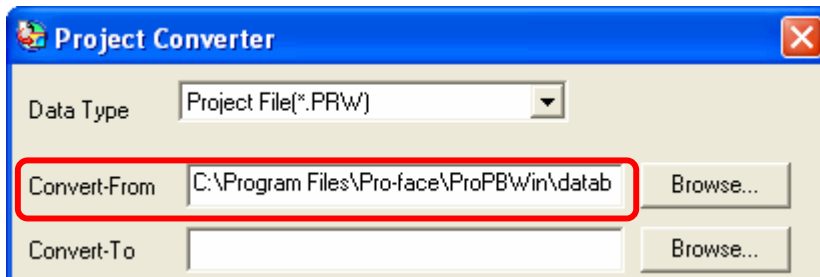
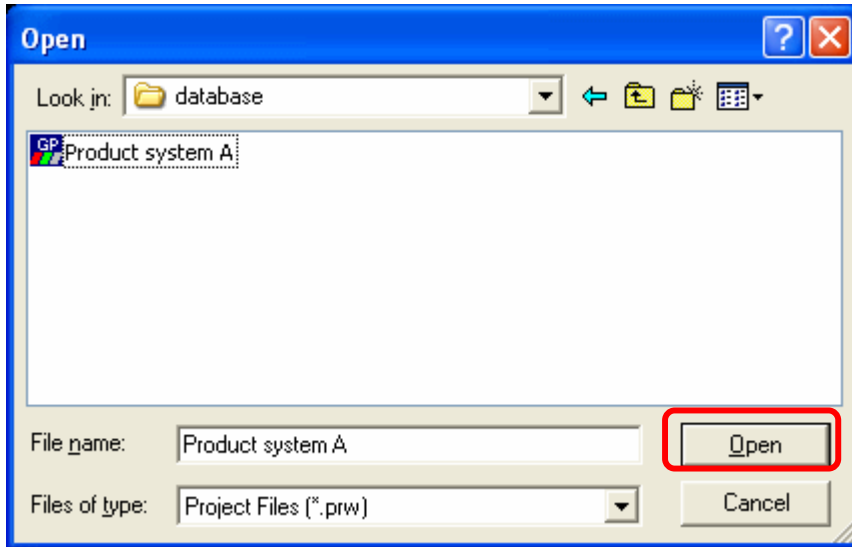


2. The Project Converter starts up and the [Project Converter] dialog box opens. Select [Project File (*.PRW)] in the [Data Type].

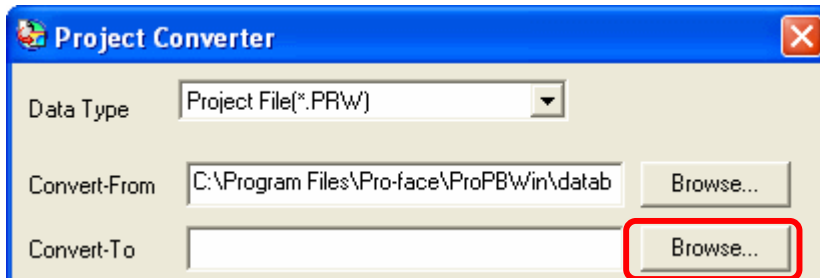


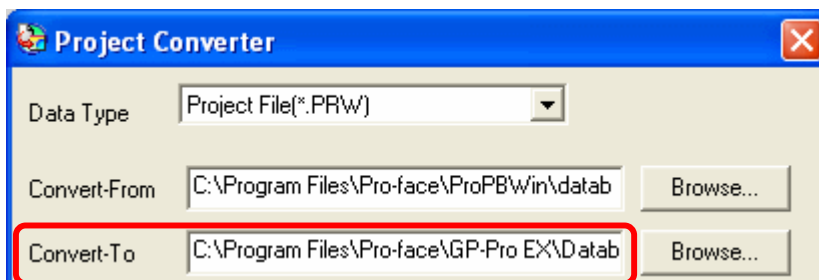
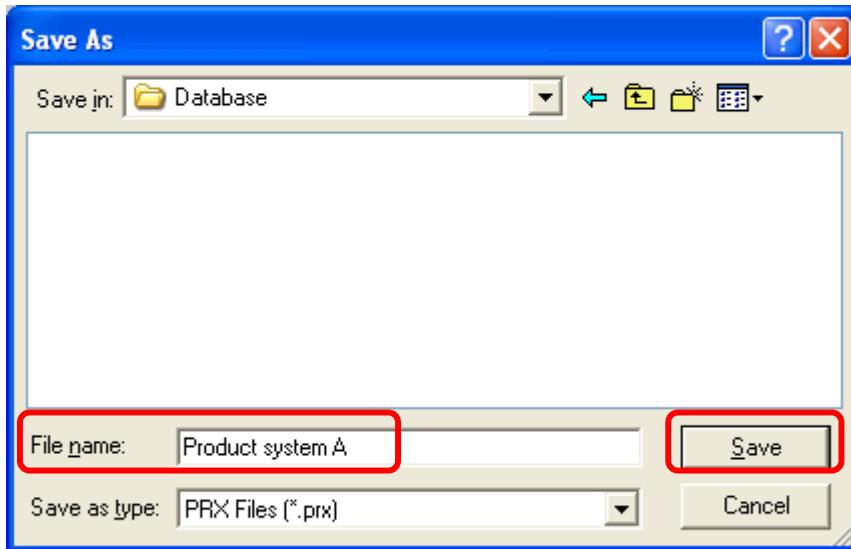
3. Designate a GP-PRO/PB3 for Windows' project file (*.prw) in [Convert-From]. Click the [Browse...] button and select a project file (e.g.: "Product system A.prw"). Click [Open], and the file will be set in [Convert-From].





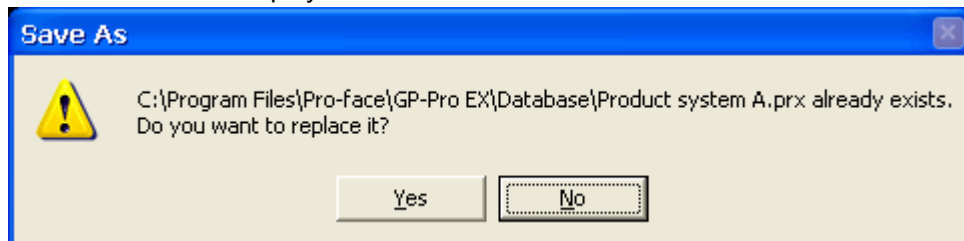
4. In [Convert-To], designate a GP-Pro EX's project file (*.prx). Click the [Browse...] button and enter a new [File Name] (e.g.: "Product system A.prx"). Click [Save], and a new project file will be set to [Convert-To].



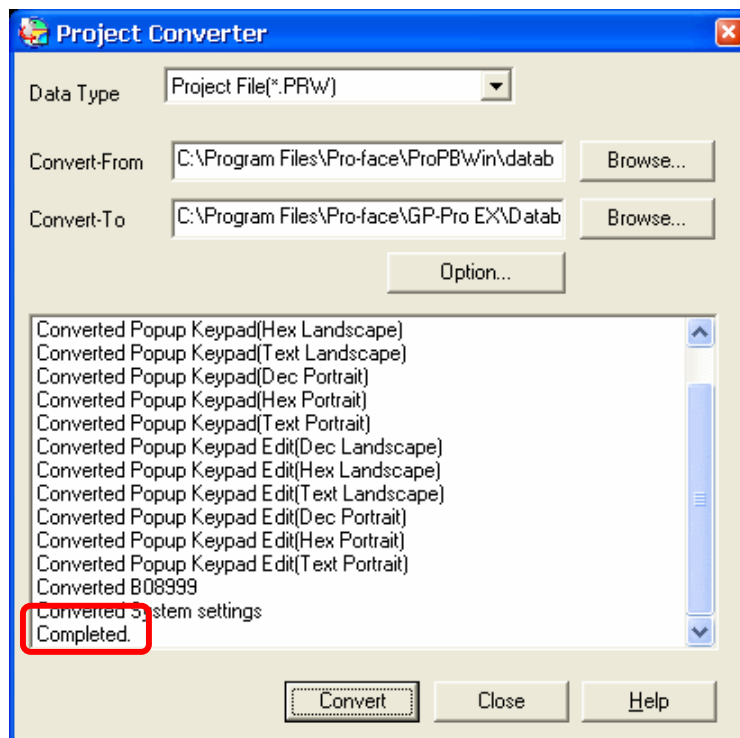
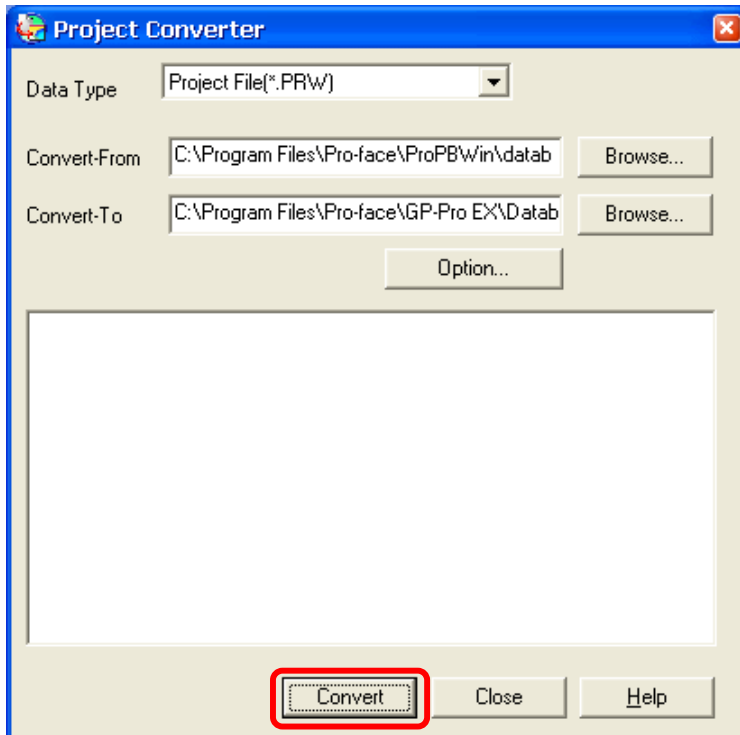


NOTE

- When a convert-to file exists, the window that confirms whether or not to overwrite the file is displayed.



5. Click [Convert] and start the conversion.

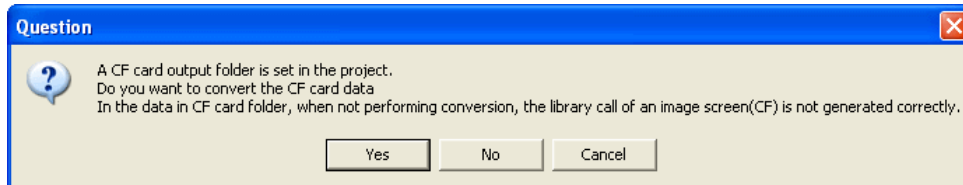


NOTE

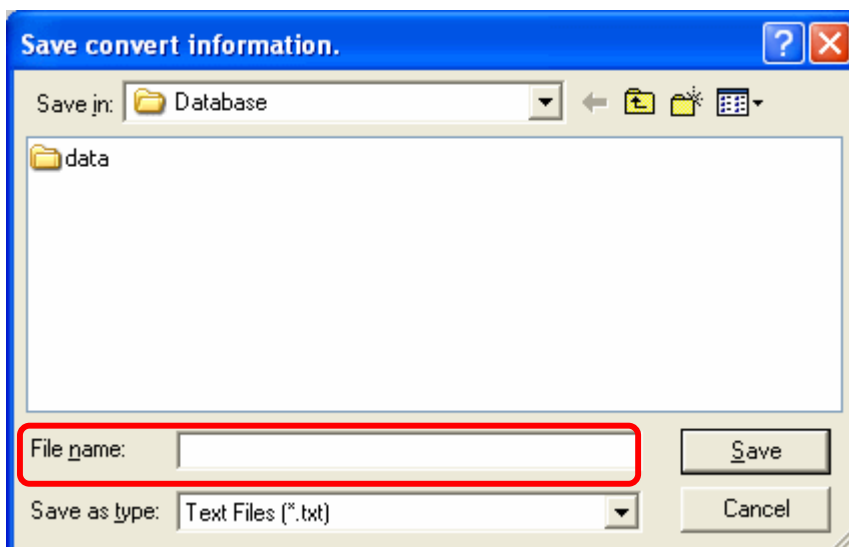
- Depending on the model you are converting from, the [Convert Destination] dialog box may appear and you can select the type and the model.
- If the following dialog box appears, set a CF card output folder.

→ [See the next page](#)

[Convert GP-PRO/PB3 for Windows' "Destination CF Card Folder"](#)



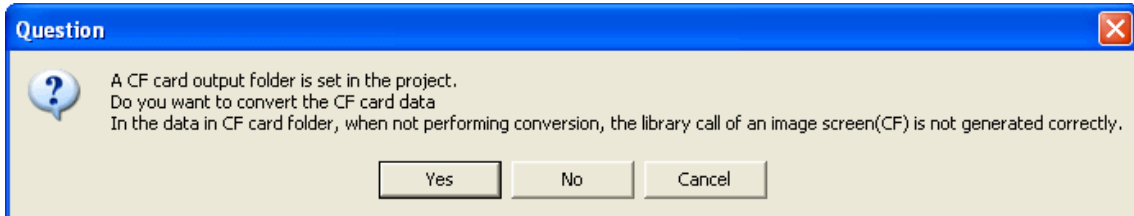
6. After conversion, the [Save convert information] dialog box appears. If you click [Save], you can save the conversion information in a text file.



7. Click [Close] to close the [Project Converter] dialog box.

◆ Convert GP-PRO/PB3 for Windows' "Destination CF Card Folder"

If you convert a project file (*.prw) with a destination CF card folder designated in the step 5, the Question dialog box asking whether or not to designate the destination CF card folder for the convert destination appears again.



Select a folder (e.g.: "Database") and click [OK].

If you click the [Make New Folder] button, you can create a new folder at any location.



IMPORTANT

In the [Question] dialog box, be sure to select [Yes] and specify the destination folder. If you select [No], images will not be called correctly.

3.5 Differences of software after conversion

Check the differences of screen data after conversion.

For the details of each item, refer to the booklet "Compatibility of Software" or visit our website.

<http://www.pro-face.com/otasuke/ga/gp3000/replace/soft.htm>

1	Touch Panel Type
2	Compatibility of Bit Switch
3	Compatibility of Trend Graph
4	Compatibility of K Tag (Input Order)
5	Compatibility of K Tag (Difference of Writing)
6	Compatibility of K Tag (Indirect Setting)
7	Compatibility of N Tag
8	About the performance when a window is overlapping on a momentary switch
9	About the performance when display area of the system window is overlapping
10	Change of Tag Process
11	Compatibility of Text
12	Compatibility of Fill
13	Compatibility of CF Card
14	Precautions for conversion when filing data is saved in a CF card
15	Precautions for setting "Color Settings" to [256 Colors without blinking]
16	Precautions for loading a part with "L Tag (Library Display)"
17	Compatibility of MRK files and CPW files
18	Compatibility of VM Unit Settings
19	Compatibility of Extended SIO Script
20	Compatibility of Sound Data
21	Compatibility of Device Monitor
22	Compatibility of J Tag and R Tag
23	Converting Screen Data of DOS
24	Compatibility of Standard Font
25	Compatibility of Trigger Condition of D-Script (D-Script is triggered immediately after a screen changes or the power is turned on.)
26	Compatibility of U Tag (Difference in position of a called Window screen)
27	Precautions for using Screen Level Change

3.6 Transfer screen data to the ST3000/GP3000

Transfer the converted project file to the ST3000/GP3000 series via USB transfer cable, CF card or USB flash drive. Here, this section explains, as an example, how to transfer screen data by USB transfer cable (model: CA3-USBCB-01).



PC



CA3-USBCB-01



ST3000

1. Connect your PC and the ST3000 series with a USB transfer cable. If the driver of the cable has not been installed on your PC, a dialog box will appear. Please follow the instructions.

NOTE

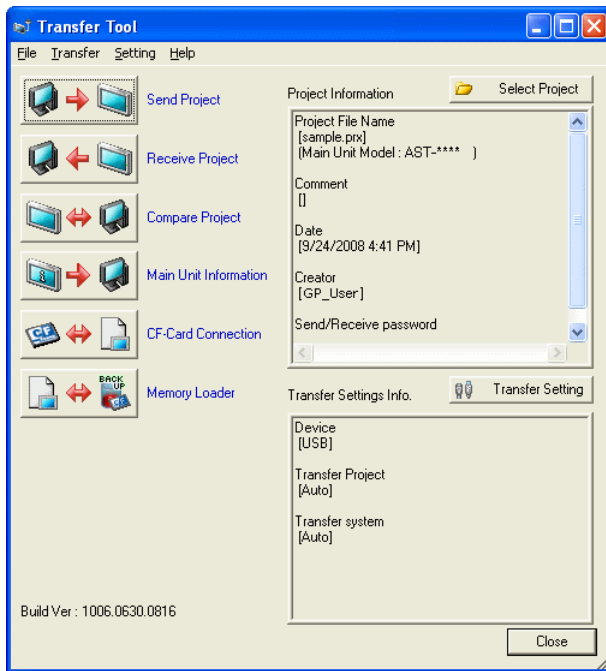
The “Hardware Installation” dialog box as follows may appear during installing the driver of a USB depending on the security level of Windows XP. Click [Continue Anyway] to start installing the driver for CA3-USBCB-01. When installation is completed, click [Finish].



2. Turn on the display unit's power. The "Initial Start Mode" screen will appear on the display unit.

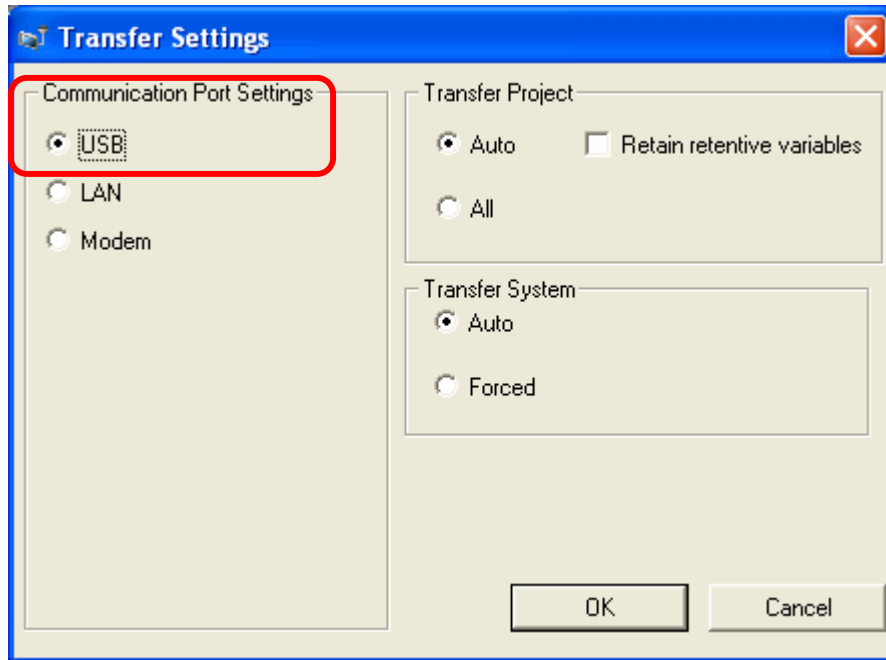
This screen will appear when you first connect the display unit's power code. After transferring a project file once, this screen will not appear again.

3. On the GP-Pro EX's State Toolbar, click the [Transfer Project] icon to open the Transfer Tool.

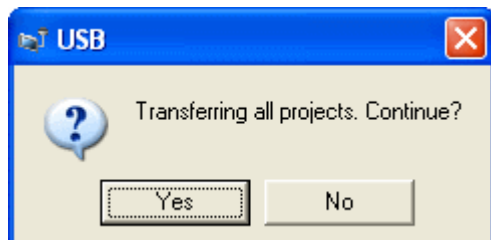


4. Check the project file name and other data to be transferred in the Project Information. To transfer a different project file, click the [Select Project] button and select a project file.

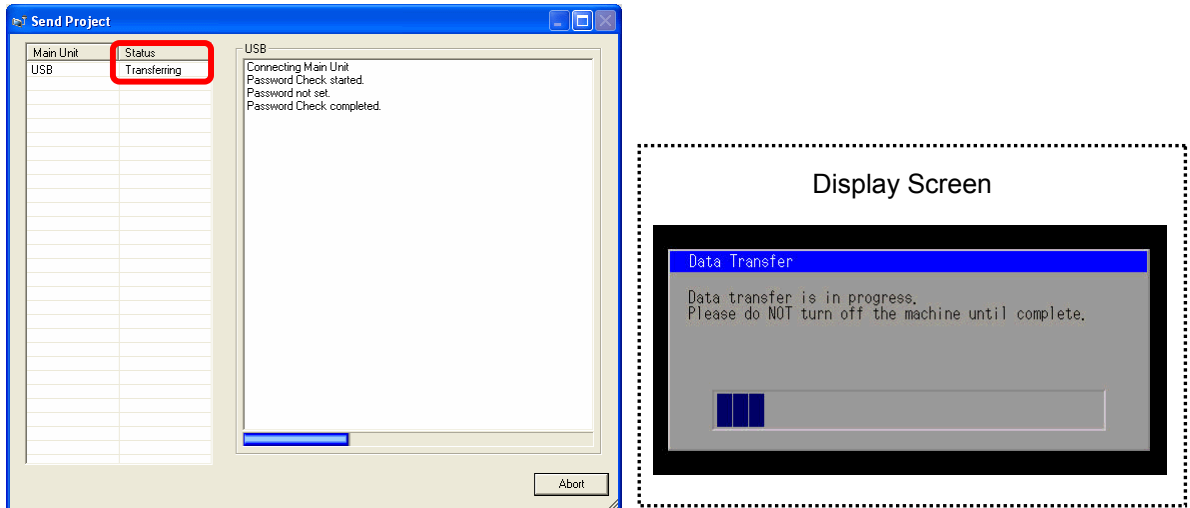
5. Make sure that the [Device] is set to [USB] in the “Transfer Settings Info.” If not, click the [Transfer Setting] button to open the “Transfer Settings” dialog box. Select [USB] in the Communication Port Settings field and click [OK].



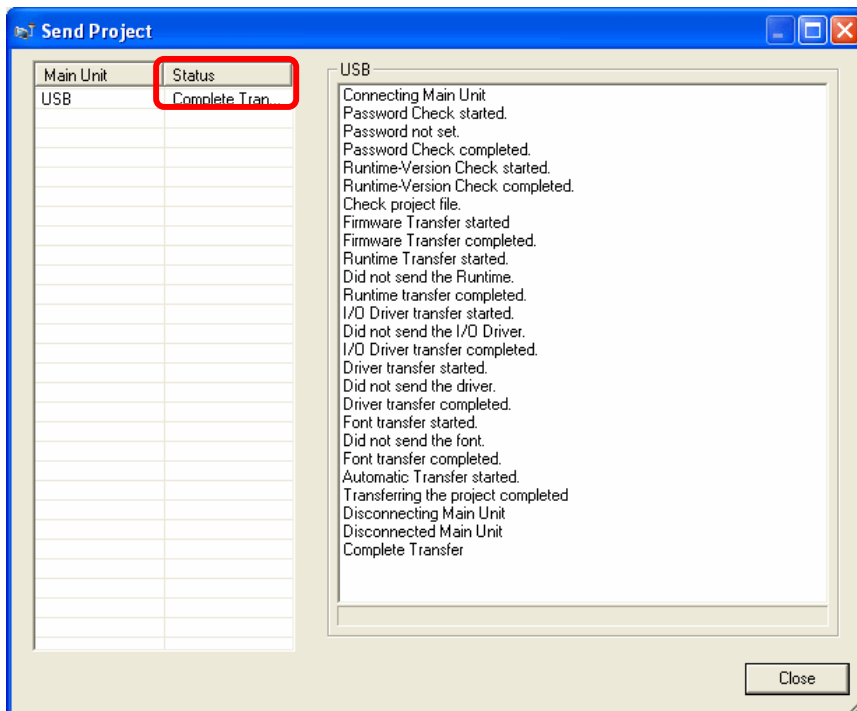
6. Click [Send Project] to start transfer. When the following dialog box appears, click [Yes]. This dialog box doesn't appear when the same project file is sent again.



- The following dialog box appears during transfer and you can check the communication status. (The display unit enters the Transferring mode and communication with the device such as a PLC is terminated.)



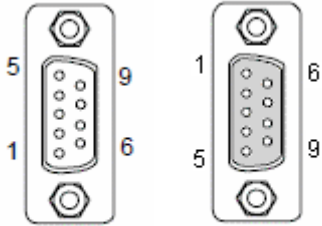
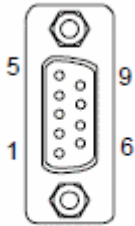
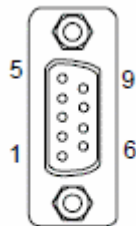
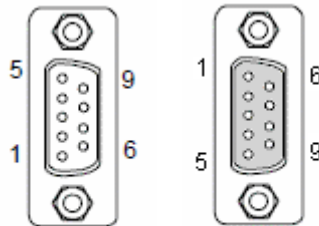
- When transfer is completed, the status displayed in the dialog box will change from [Transferring] to [Complete Transfer]. Click [Close] to close the dialog box. (The display unit will be reset and a screen of the transferred project file will be displayed.)



- Close the Transfer Tool.

Chapter 4. Communication between ST3000/GP3000 and Device/PLC

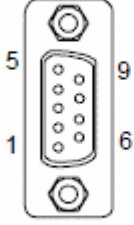
4.1 Shapes of COM ports

	ST40x Series	ST3000/GP3000 Series																				
COM1	9-pin D-Sub	9-pin D-Sub																				
	 <p>(male) (female)</p> <table border="1"> <tr> <td>ST-400</td> <td>RS-422</td> <td>Male</td> </tr> <tr> <td>ST-401</td> <td>RS-232C</td> <td>Male</td> </tr> <tr> <td>ST-402</td> <td>RS-485 (MPI)</td> <td>Female</td> </tr> <tr> <td>ST-403</td> <td>RS-232C/422</td> <td>Male</td> </tr> </table>	ST-400	RS-422	Male	ST-401	RS-232C	Male	ST-402	RS-485 (MPI)	Female	ST-403	RS-232C/422	Male	 <p>(male)</p> <table border="1"> <tr> <td>ST-3201A</td> <td>RS-232C</td> <td>Male</td> </tr> <tr> <td>ST-3211A</td> <td>RS-232C</td> <td>Male</td> </tr> <tr> <td>GP-3200A</td> <td>RS-232C/485 (422)</td> <td>Male</td> </tr> </table>	ST-3201A	RS-232C	Male	ST-3211A	RS-232C	Male	GP-3200A	RS-232C/485 (422)
ST-400	RS-422	Male																				
ST-401	RS-232C	Male																				
ST-402	RS-485 (MPI)	Female																				
ST-403	RS-232C/422	Male																				
ST-3201A	RS-232C	Male																				
ST-3211A	RS-232C	Male																				
GP-3200A	RS-232C/485 (422)	Male																				
COM2	9-pin D-Sub RS-422	9-pin D-Sub																				
	 <p>(male) ST402 only</p>	 <p>(male) (female)</p> <table border="1"> <tr> <td>ST-3201A</td> <td>RS-485 (422)</td> <td>Male</td> </tr> <tr> <td>ST-3211A</td> <td>RS-485 (MPI)</td> <td>Female</td> </tr> <tr> <td>GP-3200A</td> <td>N/A</td> <td>Male</td> </tr> </table>	ST-3201A	RS-485 (422)	Male	ST-3211A	RS-485 (MPI)	Female	GP-3200A	N/A	Male											
ST-3201A	RS-485 (422)	Male																				
ST-3211A	RS-485 (MPI)	Female																				
GP-3200A	N/A	Male																				

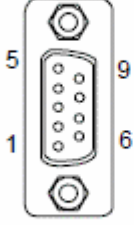
4.2.1 Signals on COM1

► ST40x Series

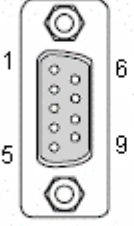
ST-400: RS-422 interface (male)

Pin Connection	Pin No.	Signal	Signal Name	Direction
 <p>(male)</p>	1	RDA	Receive data A	Input
	2	RDB	Receive data B	Input
	3	SDA	Send data A	Output
	4	ERA	Enable receive A	Output
	5	SG	Ground	-
	6	CSB	Clear send B	Input
	7	SDB	Send data B	Output
	8	CSA	Clear send A	Input
	9	ERB	Enable receive B	Output

ST-401: RS-232C interface (male)

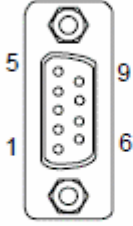
Pin Connection	Pin No.	Signal	Signal Name	Direction
 <p>(male)</p>	1	CD	Carrier detect	Input
	2	RD	Receive data	Input
	3	SD	Send data	Output
	4	ER	Enable receive	Output
	5	SG	Ground	-
	6	DR	Data set ready	Input
	7	RS	Request send	Output
	8	CS	Clear send	Input
	9	RI	Ring indicate	Input

ST-402: RS-485 (MPI) interface (female)

Pin Connection	Pin No.	Signal	Signal Name	Direction
 <p>(female)</p>	1	NC	No connection	-
	2	NC	No connection	-
	3	LINE(+)	Line (+)	In/Output
	4	RTS	Request Send	Output
	5	SG	Ground	-
	6	5V	5V External Output *	Output
	7	NC	No connection	-
	8	LINE(-)	Line (-)	In/Output
	9	NC	No connection	-

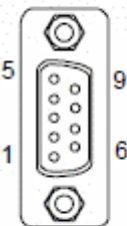
* When providing power via the Siemens AG PROFIBUS connector, power cannot be connected to the device/PLC.

ST-403: RS-232C/ RS-422 interface (male)

Pin Connection	Pin No.	Signal	Signal Name	Direction
 <p>(male)</p>	1	CD/RDA	Carrier detect /Receive data A	Input /Input
	2	RD/RDB	Receive data /Receive data B	Input /Input
	3	SD/SDA	Send data/Send data A	Output /Output
	4	ER/ERA	Enable receive /Enable receive A	Output /Output
	5	SG/SG	Ground/Ground	-
	6	DR/CSB	Data set ready/Clear send B	Input /Input
	7	RS/SDB	Request send /Send data B	Output /Output
	8	CS/CSA	Clear send/Clear send A	Input /Input
	9	RI/ERB	Ring indicate /Enable receive B	Input /Output

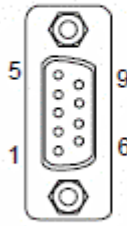
► ST3000/GP3000 Series

RS232C

Pin Arrangement	Pin No.	RS232C		
		Signal Name	Direction	Meaning
 <p>(male)</p>	1	CD	Input	Carrier Detect
	2	RD(RXD)	Input	Receive Data
	3	SD(TXD)	Output	Send Data
	4	ER(DTR)	Output	Data Terminal Ready
	5	SG	-	Signal Ground
	6	DR(DSR)	Input	Data Set Ready
	7	RS(RTS)	Output	Request to Send
	8	CS(CTS)	Input	Send Possible
	9	CI(RI)/VCC	Input/-	Called status display +5V±5% Output 0.25A *
	Shell	FG	-	Frame Ground (Common with SG)

* The RI/VCC selection for the Pin #9 is switched via software. The VCC output is not protected against overcurrent. To prevent damage or a unit malfunction, use only the rated current.

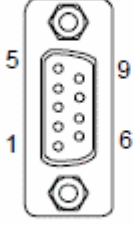
RS485 (422) * GP-3200A only

Pin Arrangement	Pin No.	RS422/RS485		
		Signal Name	Direction	Meaning
 <p>(male)</p>	1	RDA	Input	Receive Data A(+)
	2	RDB	Input	Receive Data B(-)
	3	SDA	Output	Send Data A(+)
	4	ERA	Output	Data Terminal Ready A(+)
	5	SG	-	Signal Ground
	6	CSB	Input	Send Possible B(-)
	7	SDB	Output	Send Data B(-)
	8	CSA	Input	Send Possible A(+)
	9	ERB	Output	Data Terminal Ready B(-)
	Shell	FG	-	Frame Ground (Common with SG)

4.2.2 Signals on COM2

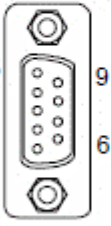
► ST40x Series (RS422) * ST-402 only

ST-402: RS-422 interface (male)

Pin Connection	Pin No.	Signal	Signal Name	Direction
 <p>(male)</p>	1	RDA	Receive data A	Input
	2	RDB	Receive data B	Input
	3	SDA	Send data A	Output
	4	ERA	Enable receive A	Output
	5	SG	Ground	-
	6	CSB	Clear send B	Input
	7	SDB	Send data B	Output
	8	CSA	Clear send A	Input
	9	ERB	Enable receive B	Output

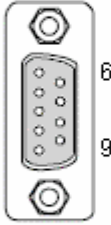
► ST3000/GP3000 Series

ST-3201A: RS485 (422) interface (male)

Pin Arrangement	Pin No.	RS422/RS485 *		
		Signal Name	Direction	Meaning
 <p>(male)</p>	1	RDA	Input	Receive Data A(+)
	2	RDB	Input	Receive Data B(-)
	3	SDA	Output	Send Data A(+)
	4	ERA	Output	Data Terminal Ready A(+)
	5	SG	-	Signal Ground
	6	CSB	Input	Send Possible B(-)
	7	SDB	Output	Send Data B(-)
	8	CSA	Input	Send Possible A(+)
	9	ERB	Output	Data Terminal Ready B(-)
	Shell	FG	-	Frame Ground (Common with SG)

* ST-3201A units with revision code "C" or later are compliant with RS485.

ST-3211A: RS485 (MPI) interface (female)

Pin Arrangement	Pin No.	RS485 (MPI only)		
		Signal Name	Direction	Meaning
 <p>(female)</p>	1	NC	-	-
	2	NC	-	-
	3	LINE(+)	Input/ Output	LINE(+)
	4	RS(RTS)	Output	Request to Send
	5	SG	-	Signal Ground ^{*1}
	6	5V	-	5V external output ^{*2*}
	7	NC	-	-
	8	LINE(-)	Input/ Output	LINE(-)
	9	NC	-	-
	Shell	FG	-	Frame Ground ^{*1} (Common with SG)

*1 The SG and FG terminals are isolated.

*2 The 5V output for the Pin #6 is not protected against overcurrent. To prevent damage or unit malfunctions, use only the rated current.

*3 When providing power via the Siemens AG PROFIBUS connector, power cannot be connected to the device/PLC.

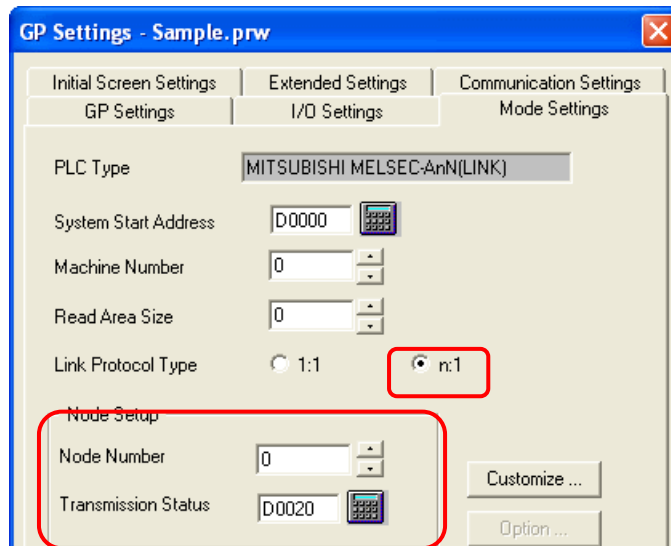
NOTE

The GP-3200A unit is not equipped with the COM2 port.

4.2 Multilink Connection

If you convert a project file in which the multilink connection via RS-422 (n to 1) was set in GP-PRO/PB3 for Windows, the setting will be converted to the “1 to 1 connection” automatically.

- Settings on GP-PRO/PB3 for Windows



For the information on how to configure multilink connection via GP-Pro EX, see “Serial Multilink” on our support website Otasuke Pro!

<http://www.pro-face.com/otasuke/ga/3000/faq.cgi?mode=3000&cat=c>

For the information on drivers that support serial multilink communication, see the following page:

http://www.pro-face.com/otasuke/ga/3000/0009_sml03_e.html