

Creating a bootable CF card with GP-Pro/PBIII C-Package 03 software

Open your project in GP-Pro.

Click on Transfer:



750 North Maple Road

Saline, MI 48176

Phone: 734.429.4971

Fax: 734.429.1010

www.profaceamerica.com

sales@profaceamerica.com

Global HMI Brands:

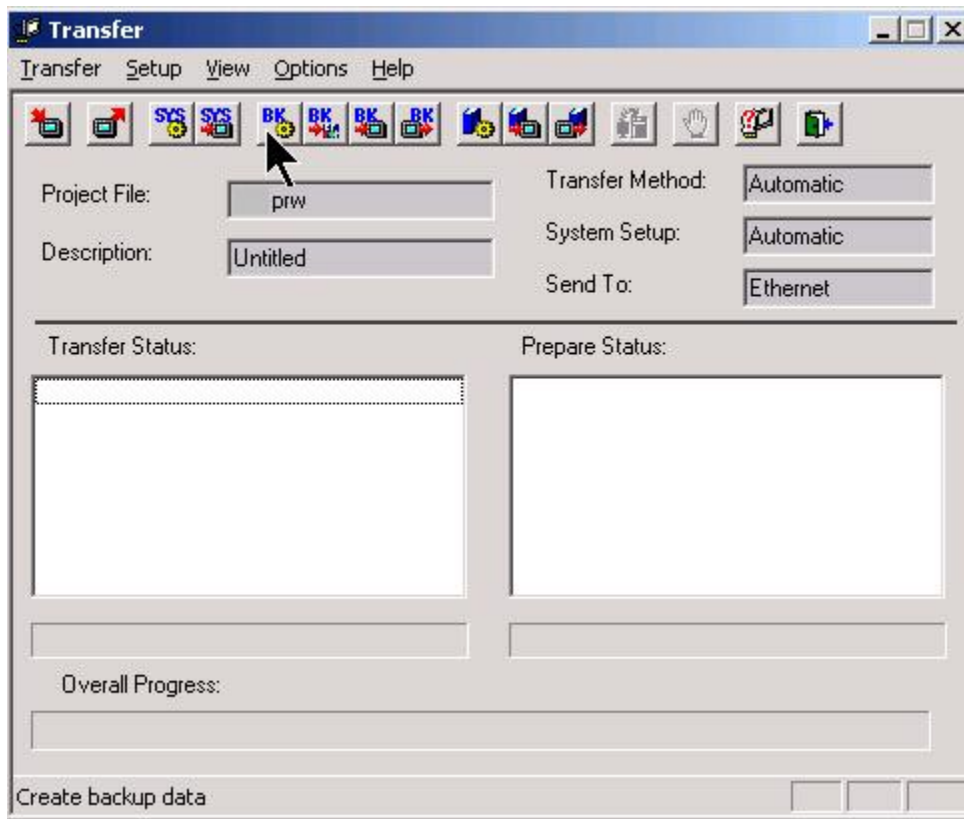
Pro-face®

Operator Interfaces & Industrial PCs

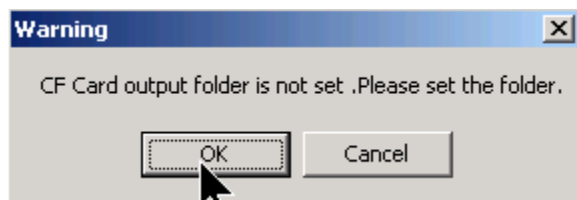
XYCOM™

Industrial PCs & Monitors

Click on the "Create Backup Data" icon:



Click OK:



750 North Maple Road

Saline, MI 48176

Phone: 734.429.4971

Fax: 734.429.1010

www.profaceamerica.com

sales@profaceamerica.com

Global HMI Brands:

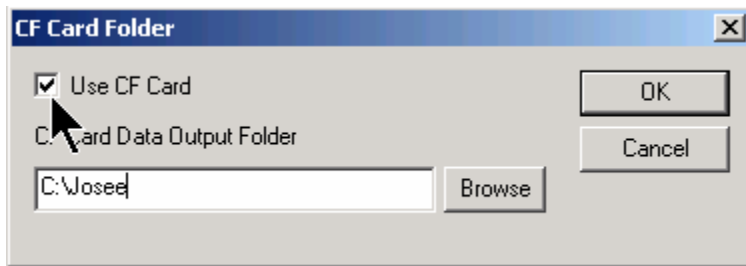
Pro-face

Operator Interfaces & Industrial PCs

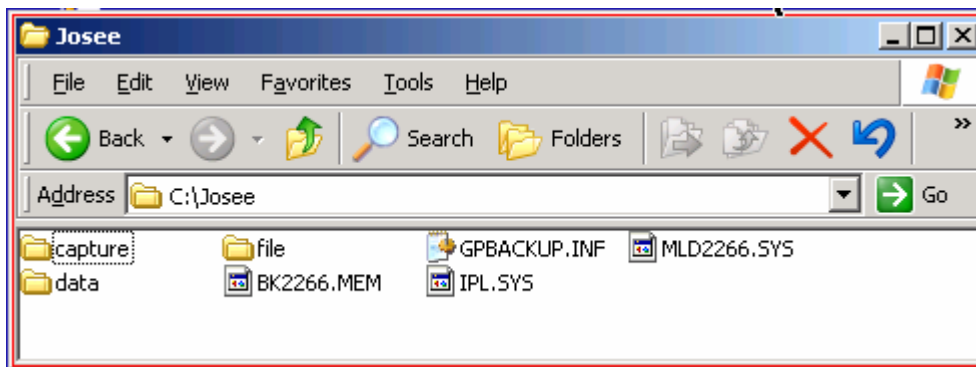
XYCOM™

Industrial PCs & Monitors

Check the "Use CF Card" box. Select a folder to save your files, then click OK:



When finished, go to the folder and make sure you see seven objects:



Insert a CF card into your computer. The CF card must be formatted in FAT [FAT 16] NOT FAT 32. See [Selecting a CF Card](#) for compatible cards.

Copy and paste these 7 files into the root directory of the CF card

Turn off your GP and insert the CF card.

Next to the CF card slot is a very small bank of 4 DIP switches.

Turn on DIP Switch 1 and then close the cover of the CF card slot.

Turn on the GP

Use the Memory Loader Tool to download the project from the CF card

When it is finished, turn off the GP, remove the CF card, and turn off DIP Switch 1.

Turn on the GP to boot to your project.

750 North Maple Road

Saline, MI 48176

Phone: 734.429.4971

Fax: 734.429.1010

www.profaceamerica.com

sales@profaceamerica.com

Global HMI Brands:

Pro-face®

Operator Interfaces & Industrial PCs

XYCOM™

Industrial PCs & Monitors